



about us

WHO WE ARE

Based in Queensland with offices on the Sunshine Coast and Mackay, Definium is currently involved in projects throughout Queensland on various industrial land developments, government infrastructure, rail, mining and pipeline projects.

Employing state of the art survey and drafting equipment and powered by the best people in the industry, we pride ourselves in the high level of service that we provide to our clients.

Definium's directors collectively have over 100 years of dedicated industry expertise and lead a highly experienced and dedicated team. Offering more than just surveying services, we value add through our expertise in:

- Pipeline easements
- Route location
- Profile surveys
- Alignment survey setout
- Construction setout
- As constructed surveys
- Petroleum Well Location surveys
- Hydrographic surveys
- GIS & asset management
- Project management



RECENT HYDRO PROJECTS

Some of our most recent projects include:

Sunshine Coast's Lower Maroochy River and Lower Noosa River

The survey data collected was primarily used as the basis for establishing river bathymetries to be used for flood estimation and estuary management by the SCRC.

For the Maroochy River the survey area was approximately 300 hectares covering a length of approximately 5,000m.

For the Noosa River the survey area was approximately 350 hectares covering a length of approximately 7,000m.

Gladstone's Curtis Island Port facility

A survey of the proposed dock area was completed at a 10m grid spacing to supplement existing provided data. Plan presentation and volume calculations detailing the proposed channel dredging and berthing facilities have been completed for the client for internal review and inclusion in tender documentation.

Zinifex Century Mine Karumba

This project involved the survey of approximately 15km of the Norman River at Karumba to facilitate the investigation of suitable mooring sites upstream of the Zinifex berth during a cyclone event at Karumba.

WE'RE EXPERTS IN HYDROGRAPHIC SURVEYING

Definium is one of a small number of private firms with a qualified hydrographic surveyor who can undertake hydrographic surveys.

We have over 30 years experience in:

- Pre & Post dredging clearance surveys
- Channel and entrance surveys
- Beach erosion surveys
- Wharf and channel clearance surveys
- Flood mitigation investigation surveys

We pride ourselves in having up-to-date field and office technology. With this we can guarantee faster, more accurate and more efficient service. Our hydrographic survey equipment is set up for coastal, in-shore, and river/canal surveys. We use the Ceeducer Pro™ digital echo sounder in combination with Hypack hydrographic survey software and RTK GPS. Multibeam sonar data can be collected and processed should it be required.

The information we produce is easily transferable to and from most mainstream GIS, engineering and survey computer software programs.

Our equipment includes:

- Leica 1200+ series RTK GPS base, rover and repeater
- Ceeducer Pro
- Hypack software with onboard Toughbook computer
- Osprey 500 Cuddy Cab, trailer & Outboard
- CAD package software includes Autocad Civil 3D



Utilising sophisticated state-of-the-art instrumentation and Global Positioning Systems, we will ensure the acquisition, manipulation and presentation of accurate digital data. Our highly qualified staff delivers an extensive range of professional expertise in:

- Subdivision and community title
- Construction and engineering set out
- Boundary identification and pre-purchase reports
- Contour and detail surveys
- Mapping
- Hydrographic surveys
- Profile surveys
- Alignment survey setout
- Pipeline easements

We hold great pride in being able to deliver exemplary services from start to finish, and meet the strict deadlines of the industry. We are constantly looking for ways to improve our services, as we care about the satisfaction of our clients.

At Definium, we strive for a sustainable future for all your success and ours depends on it.

Whether your project is small or large, simple or complex, you'll find dealing with us straight-forward because you'll be dealing with the same consultant through the life of the project.





OUR BACKGROUND

Definium was formed on 1st July 2004 from the amalgamation of 3 survey practices on the Sunshine Coast: Reader + Clifford Surveyors, Severns Hickey Surveyors and Beachside Surveys. The original partners of the 3 firms are the 4 directors of Definium and together with our team, have vast experience in many facets of the profession including Cadastral, Engineering, Planning, GIS, Hydrographic Surveying and Data Management Systems.

Definium is a Queensland based organisation with offices on the Sunshine Coast and Mackay. Our main area of concentration of work is in the South East corner of Queensland, and Central Queensland from our two offices. However, we have experience working in many areas including Torres Straits, New Guinea, Norfolk Island, New Zealand, Oman and NSW.

WHAT WE DO BEST

Our team at Definium has professional expertise over many years in all areas of surveying and land management.

Surveying -we have registered surveyors with Consulting, Cadastral, Engineering and Hydrographic endorsements. We use only the latest equipment including total station theodolites, RTK and Static GPS, digital and analogue echo sounders and computer software & hardware.

Planning- we have been involved in the planning and project management of many developments.

Expert Witness- we have been involved in numerous expert witness roles for varying Court Cases relevant to Land Development.

Project Management- we manage the projects of specific clients. As our core business is not Project Management, the projects are selected based on an assessment of the merits of the development, and the associated Consultants we would be working with.

Land Tenure- we have experience in negotiations with landholders, local and state government bodies in the acquisition of property for development and easement surveys.

WE WILL LOOK AFTER YOU

All projects will be managed by either Neil Severns (Director), Peter Hickey (Director), Denis Clifford (Director), Gary Tronc (Director,) or Tyler Carroll (Shareholder).

Definium only employs qualified surveyors who are registered with the Surveyors Board of Queensland and as per the nature of the industry usually have no less than 25 surveyors on board at one time, but have had up to 70 when projects require the flexibility and manpower. Surveyors including Cadastral, Graduate and Surveying Associates as permanent employees, together with Survey Assistants, GIS, drafting and administrative personnel.



OUR ASSOCIATED ENTITIES

Property Lynx Pty Ltd acts as property consultants for project marketing and sales consulting services to the development industry.

Definium DMS provides an online project based document management system with online access available on demand including data management and/or spatial referencing of that data



COMPANY DETAILS

Definium Pty Ltd
ACN: 109 244 144
ABN: 74 003 253 063

Definium is registered for GST.



DON'T WORRY WE'RE COVERED

Professional Indemnity Insurance

\$15,000,000.00 with
Association of Consulting Surveyors Insurance
Society Pty Ltd
Insurer: ASCIS (QBE)
Expiry date: 30th Nov 2011 (renewed every 18
months).

Public Liability Insurance

\$20,000,000.00
Insurer: CGU
Expiry Date: 4th May, 2012 (renewed annually)

Worker Cover

Expiry Date: 30th June, 2012 (renewed
annually).

*Note: Both the Professional Indemnity Insurance
and Public Liability Insurance can be increased to
accommodate client specific requirements.*

WE TAKE SAFETY SERIOUSLY

The company has a Workplace, Health and Safety Policy in place and is adhered to as part of our Quality Assurance System. All field staff have current "Blue Card" certification – Department of Industrial Relations, 30215QLD Course in General Safety Induction (which is necessary to access construction sites).

We are currently in the process of obtaining our third party AS4801 compliance with the assistance of WorkLaw OHS Risk Management Consultants. A copy of our OH&S Policy and Procedure Manual can be provided on request.

COMPANY ACCREDITATION

Definium is accredited for Plan Examination and Endorsement with the Queensland Dept of Natural Resources (Titles Office).

QUALITY ASSURANCE

We have a Quality Assurance System in place which is continually monitored and updated.



PROFESSIONAL MEMBERSHIPS

As a proudly professional surveying business, Definium Pty Ltd is a member of the following:

- The Association of Consulting Surveyors, Australia;
- Australian Pipeline Industry Association
- The Spatial Sciences Institute, Australia
- The Institution of Surveyors, Australia.
- The Institution of Engineering and Mining Surveyors, Australia.
- The Hydrographic Society.
- The Urban Design Institute of Australia
- The Queensland Master Builders Association.

EQUIPMENT & TECHNOLOGY

We pride ourselves in having up-to-date field and office technology. With this we can guarantee faster, more accurate and more efficient service.

The firm utilises the latest in Total Station and RTK GPS equipment .

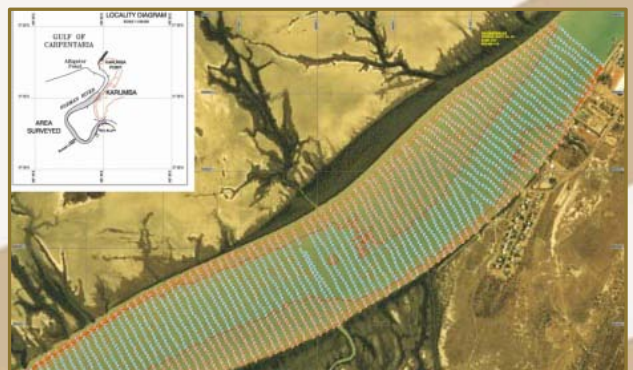
Hydrographic survey equipment is set up for coastal, in-shore, and river/canal surveys. We use the CEEMAN dual frequency hydrographic survey system in combination with the Leica 1200 RTK GPS. If an analogue trace is required we use a Raytheon DE719c survey standard fathometer (echo sounder).

Surveying and CAD package software includes AutoCAD Civil 3D, 12D and MapInfo.

The information we produce is easily transferable to and from most mainstream GIS, engineering and survey computer software programs.

Our staff are fully versed on the ADAC routines for asset capture as required by South East Queensland Councils.

All survey crews are provided with a recent model 4WD survey vehicle, and up-to-date, calibrated survey equipment



featured projects

2006- 2009

Traveston Dam

Client: QLD Water Infrastructure
Location: Traveston
Project: Design of haul roads and dam design
Tasks: detail survey, full digital terrain modeling, produce high quality plans

2007- 2007

Zinifex Century Mine

Client: Zinifex Pty Ltd
Location: Norman River, Karumba
Project: Investigation of suitable mooring sites Upstream of the Zinifex berth during a cyclone
Tasks: Hydrographic Survey approx 15km

2008- current

Surat & Bowen Basin
Pipelines

Client: QGC
(subcontract to Unidel)
Location: Surat & Bowen Basins
Project: infrastructure for QCLNG project
Tasks: Survey the route and cadastral Reinstatement of all collection headers, Lateral lines, irrigation lines, transfer lines, Discharge lines

2008- 2011

Surat & Bowen Basin
Petroleum Wells

Client: QGC
(subcontract to Unidel)
Location: Surat & Bowen Basins
Project: completing 270 wells
Tasks: petroleum well locations part of a Team completing 270 wells

2008- 2011

Upstream Project

Client: QGC

Location: Surat Basin

Project: QGC Upstream Project

Tasks: Earthworks as-constructed surveys and Calculations/verification of quantities for Progress claims on pond construction

2009- 2009

Gladstone Dredging

Client: QGC

Location: Gladstone Harbour

Project: Gladstone Dredging Project

Tasks: Survey, prepare survey plans and Volumetric calculations for dredging

2010- 2010

Maroochy/Noosa Rivers

Client: Sunshine Coast Regional Council

Location: Maroochy and Noosa Rivers

Project: establishing river bathymetries to Be used for flood estimation & estuary management

Tasks: hydrographic surveys

2011- current

Transmission Line Easements

Client: Powerlink Queensland (subcontract to Unidel)

Location: Gallilee Basin

Project: 68 Transmission Line Easements

Tasks: survey services and preparation

2011- 2011

Gladstone SeaWall

Client: Abigroup Limited

Location: Gladstone

Project: Gladstone SeaWall Project

Tasks: hydrographic survey & design, Volume calculations to verify schedule